

CHEM LINK

Construction & Maintenance

Telephone: 800-826-1681

Fax: 269-679-4448

353 E. Lyons Street

Schoolcraft, MI 49087

www.chemlink.com

Last Revision: 06/10/15

Product Description

E-Curb penetration seals replace caked on mastic and gooped on caulks with versatile, precast components and 100% solid, gun grade sealants. CHEM LINK's **E-Curb** system can usually be installed in under 15 minutes and never require flashing or mechanical attachment.

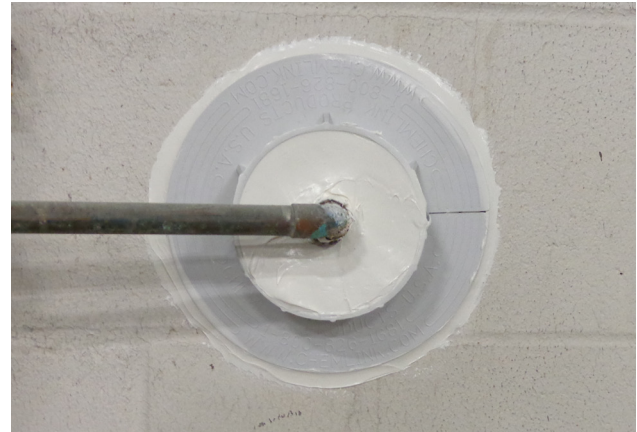
E-Curbs are designed for use on vertical, sloped, or horizontal substrates where penetrations need to be sealed. **DuraLink's** adhesion to difficult surfaces permits its use on anodized metal and coatings such as Kynar 500® PVDF.

Special Characteristics

- Rapid installation - "Slip-fit" light weight curb design reduces labor significantly.
- Excellent adhesion to most vertical substrates.
- No flashing or mechanical attachment required.
- Service Temperature -40°F to 200°F (-40°C to 93°C)
- For substrate or penetration temperatures exceeding 200°F (93°C), substitute **DuraSil™** high performance adhesive sealant for **DuraLink™**. Refer to the **DuraSil** Data Guide for limitations.
- Bonds to Kynar 500® PVDF coated metal.
- Paintable after 24 hours. Refer to the **DuraLink** Data Guide for limitations.

Restrictions

- Please contact customer service for application guidelines with temperatures below 32°F (0°C).
- Do not apply if rain is anticipated within 4 hours
- Do not use **DuraLink** on temperatures exceeding 200°F (93°C). Use **DuraSil** for this application.
- **DuraSil** Service Temperature is -80°F to 400°F (-62°C to 204°C)
- Do not prime bonding surfaces with asphalt primer.
- Do not use asphalt cement as a "night sealant." Use **DuraLink** for this purpose.
- Do not use petroleum based cleaners.
- **E-Curb** kits are designed to contain enough **DuraLink** to fill each curb with displacement in consideration. Refer to our penetration calculator under contractor resources at chemlink.com to verify volumes.



E-Curb System Components

- **E-Curb** exterior rings, straights, and corners.
- **DuraLink** Super Adhesion Sealant used for bonding the **E-Curb** components, sealing and priming the penetration.
- **DuraLink** is also used to form a durable, water-tight seal around the wall penetration.

DuraLink Super Adhesion Sealant is a durable, self-fixturing moisture cure mastic. Cartridges of **DuraLink** are supplied in each **E-Curb** Kit. Components are also sold separately.

E-Curb precast form components are composed of light weight nylon resin. The **E-Curb** is 2-inches high and is available in a variety of shapes and sizes. Standard sizes include bisected circular pieces with inside diameters of 3, 4, 6 or 9 inches; corner pieces with a 2-inch radius; straight pieces in 3-inch or 8-inch lengths; and a 4.5" x 3.4" rectangle. The outer surface is impervious to ice, corrosion, UV (ultraviolet) light and ponding water.

When installed properly, this system forms a durable, waterproof, rubber seal around penetrations. An extended warranty against leaks is activated with submittal of a completed warranty card.

Step 1

Remove all previously applied caulk, mastic, cement, loose paint, and other contaminants from penetrations with a wire brush. Clean all smooth substrates with isopropyl or denatured alcohol. DO NOT use petroleum solvents. Seal the base of each penetration with **DuraLink**. Coat penetrations with **DuraLink** to 3" out from the walls surface.



Step 2

Hold a section of **E-Curb**, flat side up, and apply a 1/4" bead of **DuraLink** to the entire bottom perimeter. Apply 1 additional 1/4" bead of **DuraLink** down the center of the section. Do not tool the beads flat. Place the **E-Curb** section on the roof surface to form a half circle around the penetration(s). Press down firmly until **DuraLink** extrudes from the outside edges.



Step 3

Apply **DuraLink** to the second section of **E-Curb** as described above. Place the second section of curb on the roof surface to form a circle with the first section. Press firmly in place until excess adhesive extrudes from the outside edges. Apply a bead of **DuraLink** around the outside base of the installed **E-Curb** and tool to form a smooth fillet.



Step 4

Pump the **E-Curb** full with **DuraLink**. Use the provided tongue depressor to smooth and level **DuraLink** to finish.

Note: To provide an adequate rubber seal, maintain a 1" distance between penetrations and inside edge of the **E-Curb**.



All properties described in this document are derived from testing conducted in laboratory conditions. Properties and performance will vary depending on environmental conditions and application technique. Test and evaluate to determine appropriate usage. Visit www.chemlink.com for the Safety Data Sheet, Technical Data Guides and full warranty for this product.

LIMITED WARRANTY: **CHEM LINK** warrants this product's performance, provided it is properly stored and applied within 1 year. If this **CHEM LINK** material is proved to be defective, return remaining product and purchase receipt for refund or replacement of product exclusive of labor or cost of labor. This is the sole and exclusive remedy for defects or failure of this product. User must read and follow the direction of the current Technical Data Guide and SDS prior to product use. User determines suitability of product for intended use and assumes all risks. Manufacturer shall not be liable for damages (including consequential or incidental damages) in excess of the purchase price, except where such exclusion or limitation is prohibited by state law. THIS WARRANTY IS IN LIEU OF ALL OTHER WARRANTIES, WRITTEN OR ORAL, STATUTORY, EXPRESS OR IMPLIED INCLUDING ANY WARRANTY OF MERCHANTABILITY OR FITNESS FOR A PARTICULAR PURPOSE; except for the above express warranty given by manufacturer, the product is sold with all faults. **CHEM LINK** SHALL NOT BE RESPONSIBLE FOR THE USE OF THIS PRODUCT IN A MANNER TO INFRINGE ON ANY PATENT OR ANY OTHER INTELLECTUAL PROPERTY RIGHTS HELD BY OTHERS. This warranty gives you specific legal rights, and you may also have other rights in the U.S. which vary from state to state. For warranty claim information, call 800-826-1681.

