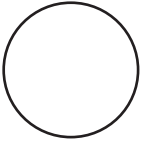




Color Selector **Concrete • Masonry**

** All CHEMLINK finished good materials are not available in every color published.*

Please review back page for color availability.



White



Almond



Gray



Tan



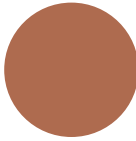
Stone



Limestone



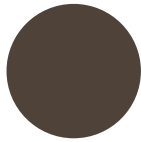
Aluminum Gray



Terra Cotta



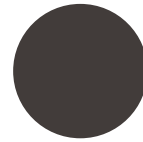
Ivory



Medium Bronze



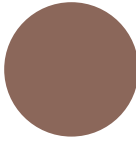
Black



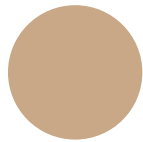
Dark Bronze



Natural Clay



Redwood Tan



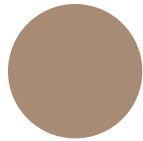
Buff



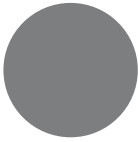
Anodized Aluminum



Aluminum Stone



Beige



Charcoal Gray

Contractor Hot Line

800-826-1681

www.chemlink.com



Product Information:

NovaLink 35 is a high performance, moisture cure, interior/exterior joint sealant for use in both moving and non moving joint applications. Polyether technology provides a long lasting weather tight seal to a variety of construction substrates. It is ideal for a wide range of applications where joint movement requires compression and extension in excess of 35%.

NovaLink TX is a high performance texturized joint sealant for use in both moving and non-moving joint applications. It is ideal for a wide range of applications where joint movement requires 35% movement with a textured appearance.

NovaLink SL is a self-leveling, moisture curing sealant, designed for application on horizontal joints in concrete construction. Applications include sealing horizontal joints such as driveways, balconies, and many roofing applications. It is ideal for a wide range of applications where joint movement requires compression and extension in excess of 25%.

M-1® is a versatile, moisture curing, high performance polyether adhesive/sealant designed for difficult construction site conditions such as wet or dry climates. **M-1®** is capable of joint movement in excess of 35% in both compression and extension.

	<i>NovaLink 35</i>	<i>NovaLink TX</i>	<i>NovaLink SL</i>	<i>M-1</i>
White	√	√	√	√
Almond	√			
Limestone	√			√
Gray	√	√	√	√
Aluminum Gray	√			
Charcoal Gray	√		√	
Terra Cotta	√			
Tan	√			√
Stone	√	√	√	
Medium Bronze	√			
Black	√	√	√	√
Dark Bronze	√	√		
Natural Clay	√			
Redwood Tan	√	√		
Buff	√			
Anodized Aluminum	√			
Aluminum Stone	√			
Beige	√			
Ivory	√			

**Custom colors are available upon special request*